

Adenium Registration Handbook (Version 2024)

By Ding Youfang & Zhu Miaoxin, Xiamen Botanical Garden

This handbook was prepared to facilitate international *Adenium* registration. It provides supplementary explanations of some terms in the application with text descriptions and diagrams (question numbers correspond to those in the Application Form). It also provides sample use of 4 cultivars in 3 types (potted flower, bonsai, and large landscaping) for your reference and comparison. In the future, we will continue to improve and refine the application and handbook. If you have any suggestions, questions, or assistance, please contact: adenium2020@163.com

Cultivar name (cultivar epithet)

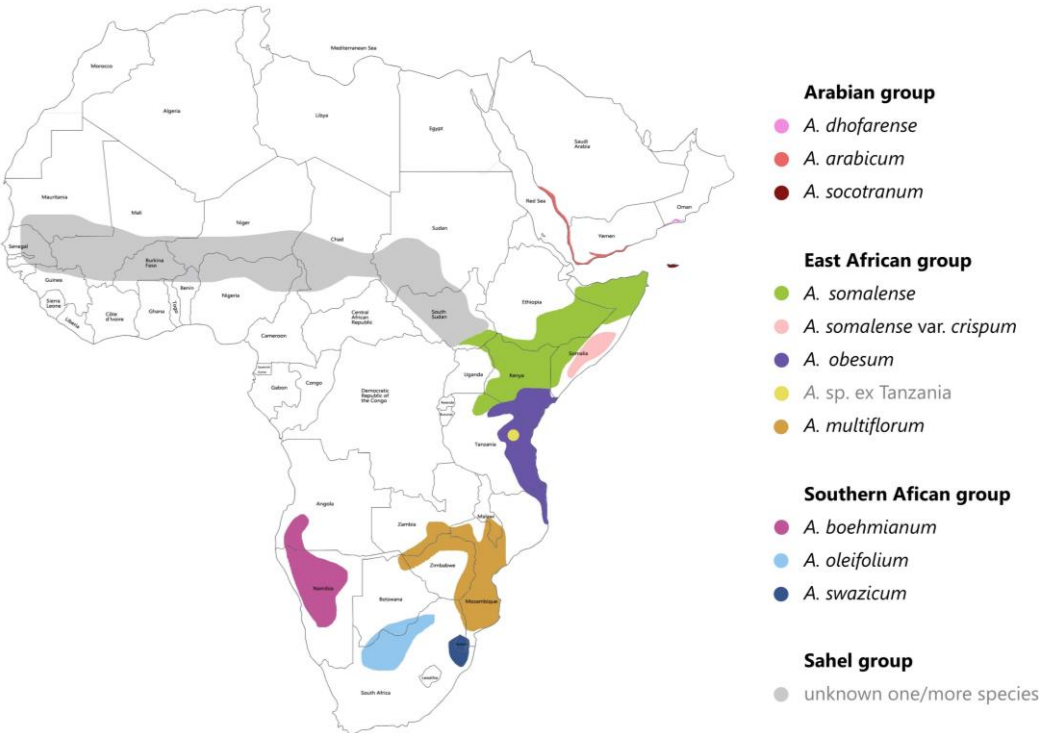
- (1) Cannot be repeated or confused with cultivar name that have been accepted/established/published
- (2) Cannot be repeated or confused with synonym/working name/trade designation of existing cultivar
- (3) Cannot be working name/code used in breeding/cultivation/marketing, such as: 'BP200', 'EV100', 'G15', 'MAD1000', 'RC001'
- (4) Must not contain words synonymous with *Adenium*, such as: Adenium, Ad, AD, Shamo Meigui, Shamei, Aden Rose, Desert Rose, Rosa de Deserto, Rosa de Invierno, Rosa del Desierto, Desert Azalea, Mock Azalea, Azalea, Kamboja Jepang, Kamboja, Tianbao Hua, Shahongji, Fugui Hua
- (5) Must not contain words related to plant classification/breeding, such as: hybrid, variet, variety, mutation, selection, improved
- (6) Must not contain untrue traits/ancestry/origin/personal identity, such as: blue. Also do not exaggerate the advantages, such as: superlative vocabulary, the most
- (7) Cannot be adjective(s) alone describing general traits, such as: Dark, Double Red, Large White
- (8) Must not be too simple, such as: 'U', 'U! ', '200', '2000! ', 'VI', 'VI!', also must not be too complicated, such as: long and difficult vocabulary, unfamiliar words. It is recommended to use 1~3 common words to the name.

Question 2: Cultivar creator, Cultivar discoverer (both are breeders)

Breeding Method	Cultivar Creator	Cultivar Discoverer
Crossing	hybridizer	selective breeder
Artificial Mutation	mutagenesis breeder	selective breeder
Seedling/Bud Variation	nature	selective breeder

Question 8:
Belonging

The species (or infraspecific taxon) classification of *Adenium* is still being studied, and ICRAA currently uses the following classification:



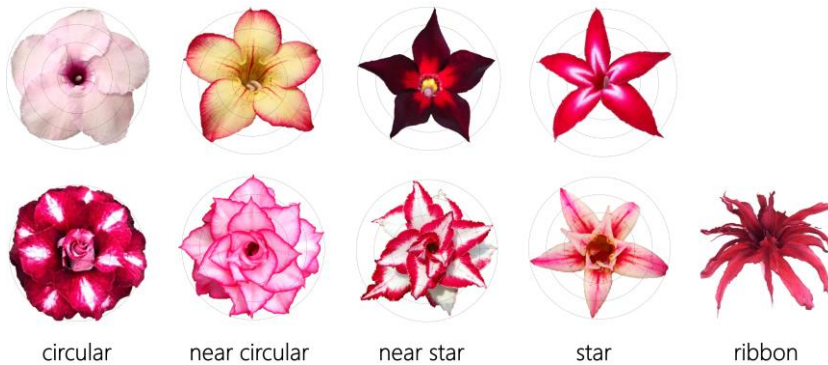
Question 13-1 Flower diameter, 13-2 Petal width



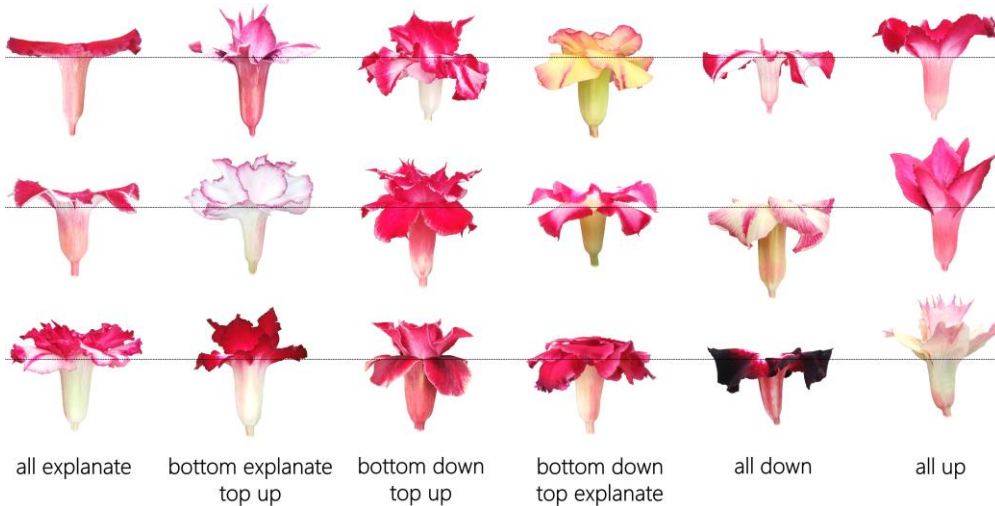
Question 13-4 Petal edge shape (Please observe the type of most flowers when they are in full bloom)



Question 13-5 Flower shape top view (Please observe the type of most flowers when they are in full bloom)



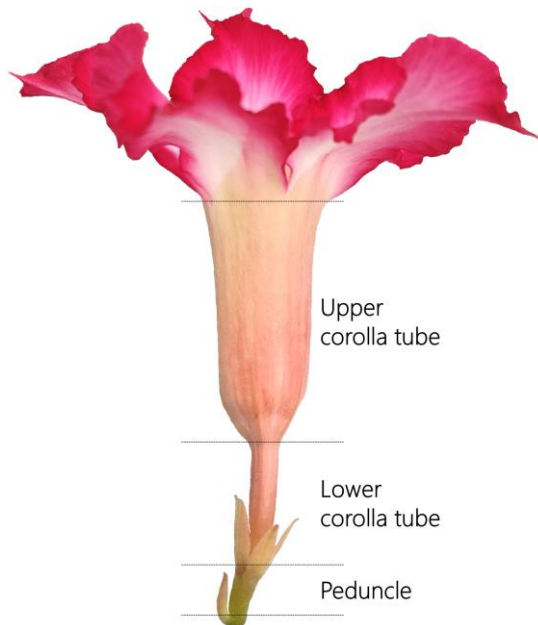
Question 13-6 Flower shape side view (Please observe the type of most flowers when they are in full bloom)



Question 13-8 The inside and the outermost petal colors (Please observe the type of most flowers when they are in full bloom)



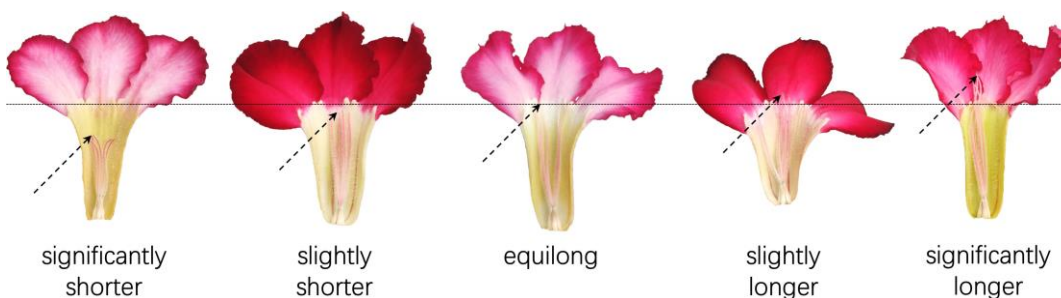
Question 13-15,16,18,19 Peduncle, lower corolla tube, upper corolla tube



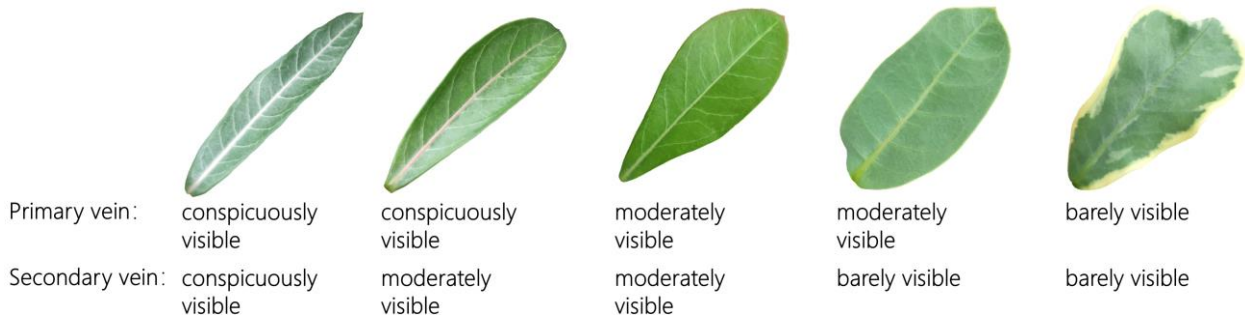
Question 13-17 Number of nectar guide line(s) per petal lobe (Please observe the type of most flowers when they are in full bloom)



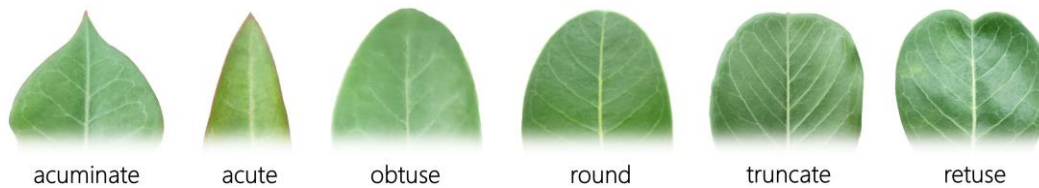
Question 13-21 Anther appendages (Please observe the type of most flowers when they are in full bloom)



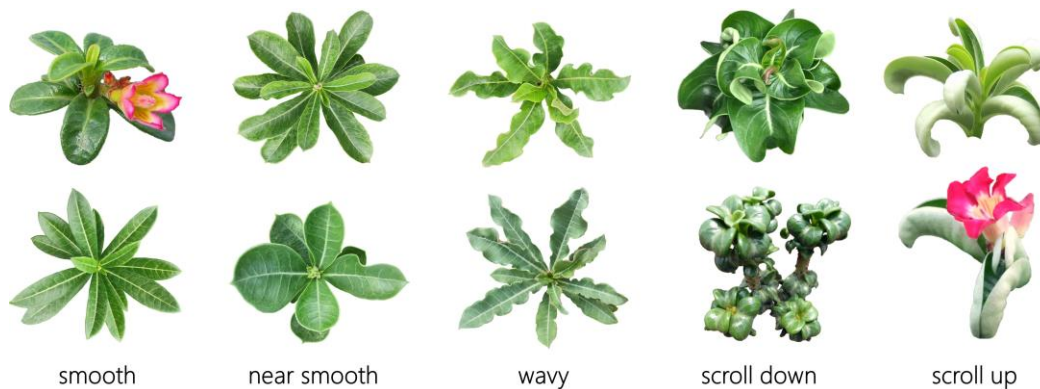
Question 14-2 Primary vein, secondary vein (Please observe the type of most mature leaves when the plant is well watered)



Question 14-3 Leaf tip shape (Please observe the type of most mature leaves when the plant is well watered)



Question 14-4 Leaf edge shape (Please observe the type of most mature leaves when the plant is well watered)



Question 14-5 Leaf texture (Please observe the type of most mature leaves when the plant is well watered)



Question 15-1 Vertical branching angle (Please observe the type of most branches when the plant is well watered)

